

# SKYLINE ENHANCEMENT MODULE

## YEAR TO DATE GENERAL LEDGER

### YEAR TO DATE GENERAL LEDGER REPORT

The Year to Date General Ledger was designed to help analyze the General Ledger in an easy to read and user friendly manner. As an Accountant or a Property Manager this ledger can be very helpful.

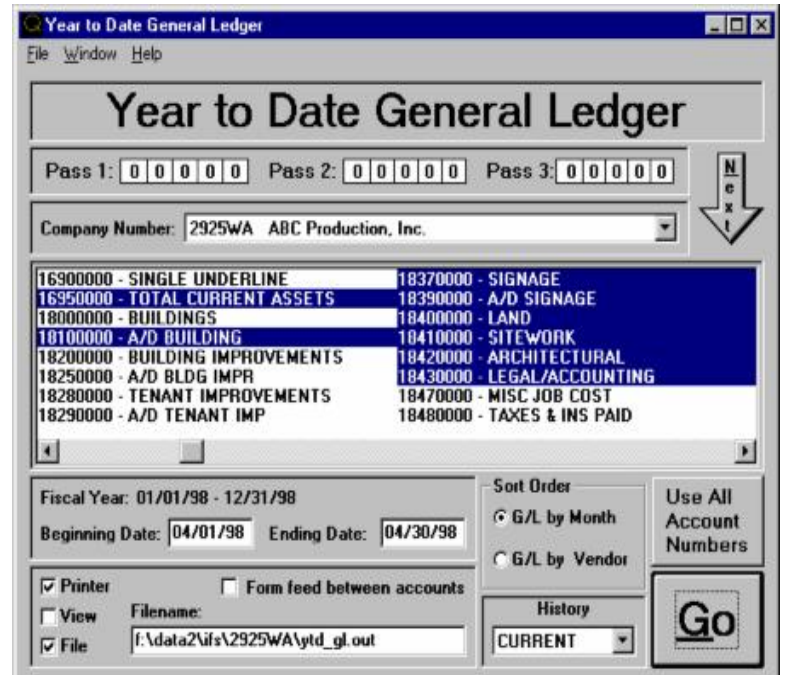
For Example, you have the ability to sort the Ledger by Vendor name or by month. If you choose to sort by Vendor you would be able to see, for any given expense account, what was paid to a specific Vendor, including the check number and the Invoice Description.

But, the sorting possibilities do not stop there. When you are looking at the Rental Income Account, the report will display the Tenants long name and will sub-total all Rent charges for any given Tenant. It then becomes very easy to check what and how often you billed each Tenant.

You can print one Account, a range of Accounts, even, a random Account selection. The Report can be run for a user entered date range and can be run for the Current Year, or Prior Years. The program prints all Transactions in the date range regardless of whether the General Ledger has been closed or not. Monthly reports are sub-totaled by Account Number and Month End. Vendor reports are sorted by Account Number, Journal Key (Journal Entries last), Vendor Name and Date.

The program is written with a great deal of flexibility, accommodating Alternate Data Directories and User Defined Printer Selections (including duplex printing options). When printing individual Accounts the user can specify a form feed between Accounts that will send a page break after each Account Number's total.

Sample Report on Reverse Side:



Date: 7/20/1998  
 Time: 3:02:40 PM

Year to Date General Ledger - Sorted by Vendor  
 355 - 355 Kronkite

Page 1

Date Range: 09/01/97 to 12/31/97

Date	Journal	Description	Debit	Credit	Balance
G/L Account 40000000 - RENT - BASE					
Beginning Balance					-3,404,688.5
09/01/97	SK	LIGHTS CORPORATION		3,583.33	
09/01/97	SK	LIGHTS CORPORATION		9,236.67	
10/01/97	SK	LIGHTS CORPORATION		3,583.33	
10/01/97	SK	LIGHTS CORPORATION		9,236.67	
11/01/97	SK	LIGHTS CORPORATION		3,583.33	
11/01/97	SK	LIGHTS CORPORATION		9,236.67	
12/01/97	SK	LIGHTS CORPORATION		3,583.33	
12/01/97	SK	LIGHTS CORPORATION		9,236.67	
Subtotal for LIGHTS CORPORATION				51,280.00	(51,280.00)
09/01/97	SK	EUROPEAN SATELLITE NETWORK		39,263.17	
10/01/97	SK	EUROPEAN SATELLITE NETWORK		39,263.17	
11/01/97	SK	EUROPEAN SATELLITE NETWORK		39,263.17	
12/01/97	SK	EUROPEAN SATELLITE NETWORK		39,263.17	
Subtotal for EUROPEAN SATELLITE NETWORK				157,052.68	(157,052.68)
09/01/97	SK	STATISTICAL TECHNOLOGIES INC		12,560.58	
10/01/97	SK	STATISTICAL TECHNOLOGIES INC		12,560.58	
11/01/97	SK	STATISTICAL TECHNOLOGIES INC		12,560.58	
12/01/97	SK	STATISTICAL TECHNOLOGIES INC		12,560.58	
Subtotal for STATISTICAL TECHNOLOGIES INC				50,242.32	(50,242.32)
09/01/97	SK	FOOT CARE OF MICHI		35,186.81	
10/01/97	SK	FOOT CARE OF MICHI		35,186.81	
10/01/97	SK	FOOT CARE OF MICHI		2,955.38	
11/01/97	SK	FOOT CARE OF MICHI		38,142.19	
12/01/97	SK	FOOT CARE OF MICHI		38,142.19	
Subtotal for FOOT CARE OF MICHI				149,613.38	(149,613.38)
09/01/97	SK	PERFORMING ARTS & MUSIC SCH		3,881.92	
10/01/97	SK	PERFORMING ARTS & MUSIC SCH		3,881.92	
11/01/97	SK	PERFORMING ARTS & MUSIC SCH		3,881.92	
12/01/97	SK	PERFORMING ARTS & MUSIC SCH		3,881.92	
Subtotal for PERFORMING ARTS & MUSIC SCH				15,527.68	(15,527.68)
09/01/97	SK	QUALITECH & ASSOC		4,458.75	
10/01/97	SK	QUALITECH & ASSOC		4,458.75	
11/01/97	SK	QUALITECH & ASSOC		4,458.75	
12/01/97	SK	QUALITECH & ASSOC		4,756.00	
Subtotal for QUALITECH & ASSOC				18,132.25	(18,132.25)
09/01/97	SK	MELSONS, INC.		2,466.75	
09/01/97	SK	MELSONS, INC.	83.17		
10/01/97	SK	MELSONS, INC.		2,466.75	